



Society for Anaerobic Microbiology

[Practical Anaerobic Microbiology - Cardiff 30/31 March 2010](#)

A two-day residential course; covering the theory and best practice of anaerobic microbiology in routine clinical microbiology laboratories. The practical sessions are at the Anaerobe Reference Unit at the University Hospital of Wales. Accommodation, lectures and evening anaerobe quiz will be at 3 star hotel in the locality.

Course Content

Specimen collection, Isolation media, Anaerobic incubation, Identification methods, Susceptibility testing
Clostridium difficile, Soft Tissue infections, Actinomyces infections

CPD accredited

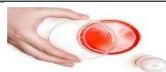
Course Tutors

Dr Jon Brazier, Consultant Clinical Scientist, NPHS Anaerobe Reference Unit, Cardiff
Dr Val Hall, Head BMS NPHS Anaerobe Reference Unit, Cardiff
Professor Mike Wren, Microbiology, University College Hospital, London

Cost including one nights accommodation £435
(£420 for IBMS & SAM members)
Extra nights accommodation £79

This course will be run once during 2010 **Only 24 delegates can be accommodated.**

For Booking form - email inbox@bcnx.co.uk



BioConnections

Helping solve microbiological problems

Forward this email

Forward



This message was sent to @emailaddress@ by
BioConnections, Thorp Arch Estate, Wetherby, LS23 7FG. www.bioconnections.co.uk
using [newzapp email marketing](#). Follow this link to [Unsubscribe](#).