

Hotel partners



Pictured above: Market Square, Nottingham

Cover (left to right): A selection of images from our hotel partners.

Opposite page (clockwise from left): Nottingham Contemporary, Royal Centre, Canalside, Nottingham Castle.

Enjoy your stay for less



Nottingham Conference Centre works with a number of hotels across the city in order to offer delegates and guests preferential rates for overnight stays.

How to book:

1. In order to take advantage of these special rates please use this brochure to determine your requirements and contact the hotel of your choice directly.
2. Quote the booking reference to receive the special rate.
3. Inform the hotel of your requirements including any special requests you may have.
4. Confirm the booking prior to your stay directly with the hotel.

Please note these sample prices are correct at time of print and are inclusive of VAT and subject to availability. You will be required to pay the hotel directly at the time of checking out, and a credit card will be required at the time of booking.

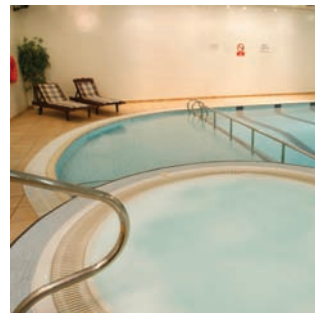
As part of our event management services Nottingham Conference Centre is happy to negotiate on your behalf for group hotel accommodation, please contact us for more information on this service.

If you have any further questions, please contact Nottingham Conference Centre on **+44 (0)115 848 8000** or at **enquiries@nottinghamconferencecentre.co.uk**.

www.nottinghamconferencecentre.co.uk



Crowne Plaza Nottingham



Hotel contact details

Crowne Plaza Nottingham,
Wollaton Street, Nottingham, NG1 5RH

T: 0871 942 9161
F: 0115 936 9936
E: info.cpnnottingham@qmh-hotels.com
W: www.crowneplaza.com/cpnnottingham

Name and contact details

Reservations

E: cpnottingham@qmh-hotels.com

General Manager

E: gm.cpnnottingham@qmh-hotels.com

Booking reference

Nottingham Conference Centre

Rates

Single	£90
Twin / Double	£90
Club	£120
Executive / Deluxe	£105
Other	£90
Disabled Rooms	£90

The above rates are inclusive of breakfast and VAT, and subject to availability. Please call for more information.

Disability access

Fully accessible bedrooms available. Please call for more information.

Car parking

£9.50 24-hour rate*

Pay parking for 600 cars available in on-site car parking.

* Charge correct at time of issue and is subject to change at anytime without prior notice.

Hotel location

City centre, 1 minute walk from Nottingham Conference Centre, 10 minutes from railway station and in the heart of Nottingham city's shops and restaurants.

Restaurant / Bar facilities

Swatch bar and brassiere – open 10 am until late for tea, coffee, drinks and snacks, served in a warm welcoming atmosphere. All major sporting events are shown in the bar.

Lacemaker Restaurant, A La Carte restaurant serving a range of dishes made from fresh produce with a local twist.

Leisure facilities

Full leisure club on site, including indoor pool, sauna, steam room, gymnasium (weights and cardiovascular equipment), dance studio and solarium.

Welbeck Hotel



Hotel contact details

Welbeck Hotel
Wollaton Street, Nottingham, NG1 5GS

T: 0115 841 1000
F: 0115 841 1001
E: bookings@welbeck-hotel.co.uk
W: www.welbeck-hotel.co.uk

Name and contact details

Sam and Steph

Booking reference

Nottingham Conference Centre

Rates

Single	£75
Twin / Double	£83

The above rates are inclusive of breakfast and VAT, and subject to availability. Please call for more information.

Car parking

Reduced overnight rate available at the Talbot Street Car Park, £5 between 5 pm – 9 am the next morning, anytime before 5 pm or after 9 am a £1.40 an hour applies and a maximum of £14 for 24 hours.*

* Charges correct at time of issue and subject to change at anytime without prior notice.

Hotel location

Conveniently located city centre hotel with friendly, professional service.

Rock City, Nottingham Castle and Capital FM Arena Nottingham are all close to the hotel. Nottingham Forest FC, Notts County FC and Trent Bridge Cricket Ground are all 2 km away. The en suite rooms have free Wi-Fi, air conditioning, a flat-screen TV with digital Freeview and tea / coffee-making facilities.

Restaurant / Bar facilities

65 seater Roof Top Garden restaurant and bar, located on the fifth floor of the Welbeck Hotel, with panoramic views of the city, offers you the opportunity to entertain friends, family or associates in a private setting.

Days Hotel Nottingham



Hotel contact details

Days Hotel Nottingham,
17-31 Wollaton Street, Nottingham, NG1 5FW

T: 0115 912 8000

F: 0115 912 8080

E: reception@dayshotelnottingham.co.uk

W: www.dayshotelnottingham.co.uk

Name and contact details

Reservations – Louise Parkes

General Manager – Jeremy Snape

Booking reference

Nottingham Conference Centre / DAYNOT

Rates

Single £65.50

Twin / Double £73

The above rates are inclusive of breakfast and VAT, and subject to availability. Please call for more information.

Disability access

Full disability access, please call for more information.

Car parking

Special overnight rate at Talbot Street Car Park.

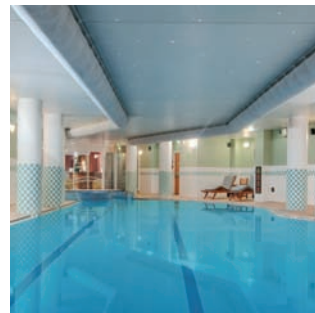
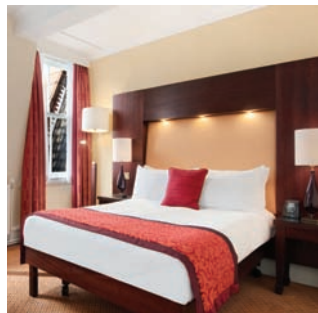
Hotel location

City centre hotel, 1 minute from Nottingham Conference Centre, 5 minutes from the railway station, direct Tram link – “Royal Centre” stop and walking distance to shops and restaurants.

Restaurant / Bar facilities

Evening bar food menu and Residents’ bar.

Hilton Nottingham



Hotel contact details

Hilton Nottingham,
Milton Street, Nottingham, NG1 3PZ

T: 0115 934 9700

F: 0115 934 9711

W: www.hilton.co.uk/nottingham

Name and contact details

Reservations – Sam Thorsby

T: 0115 934 9720

E: events.nottingham@hilton.com

Reservations – Andy Melton

General Manager – Richard Parker

Booking reference

Nottingham Conference Centre

Rates

Single	£70 Mon – Thurs £65 Fri – Sun
Twin / Double	£80 Mon – Thurs £75 Fri – Sun
Hilton Guest Room Plus	£15 supplement on the rate.
Hilton Deluxe Room	£40 supplement on the rate.

Our Hilton Guest Room Plus rooms are larger with king size beds, comfortable working space, ergonomic chair and amenities basket on the first night of arrival. Our Hilton Deluxe Rooms offer all the comforts of a Hilton Guest Room Plus but also have a minimum space of 30m², sofa, coffee table and tub chairs, use of bath robes and complimentary slippers.

The above rates are inclusive of breakfast, VAT and residential use of the Livingwell Healthclub and swimming pool. Rates are subject to availability, please call for more information.

Pictures above supplied by Hilton Nottingham.

Disability access

Full – Category 1 – Accessible to a wheelchair user travelling independently. Please call for more information.

Car parking

We recommend the Trinity Square car park opposite the hotel following satellite navigation on postcode NG1 4AF. Overnight rates from 5 pm – 9 am from £4.20, 24 hours reduced to £13 and weekend stays from Friday – Sunday £22.50.*

Limited spaces available on request at the front of the hotel charged at £20 overnight, please call the hotel for details.*

* Charges correct at time of issue and subject to change at anytime without prior notice.

Hotel location

The Hilton Nottingham is in the heart of the vibrant city centre, 5 minutes walk from Nottingham Conference Centre, close to Nottingham's business district and leisure attractions. Make the most of your time here, whether dining, unwinding, exercising or exploring the area.

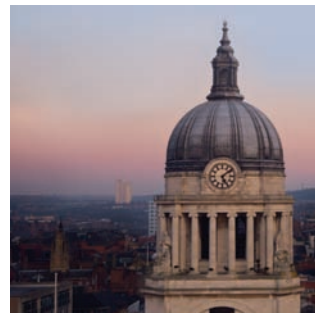
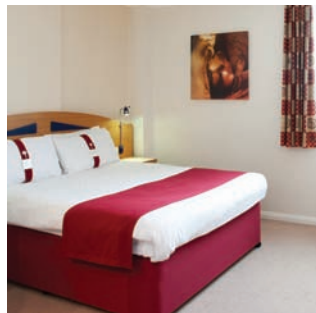
Restaurant / Bar facilities

We have something to suit all tastes, ages and preferences, so you can indulge yourself any time of day or night in our lively restaurant and bar serving international cuisine. Soak up the atmosphere in the bar or enjoy home from home favourites with 24-hour room service.

Leisure facilities

Enjoy a work out in our fully equipped gym or take a dip in the pool in the Livingwell Health Club, which is free to residents.

Holiday Inn Express Nottingham City



Hotel contact details

Holiday Inn Express Nottingham City,
Maid Marion Way, Chapel Bar, Nottingham, NG1 6JS

T: 0115 941 9931

F: 0115 941 5764

E: nottingham@kewgreen.co.uk

W: www.holidayinn-expressnottingham.co.uk

Name and contact details

Reservations – Amy Birkhead

General Manager – Jane Dipaolo

Area Sales Manager – Zoe Santin

Booking reference

Nottingham Conference Centre

Rates

Single £60

Twin / Double £60

Accessible Rooms £60

The above rates are inclusive of breakfast and VAT, and subject to availability. Please call for more information.

Disability access

Full disability access, please call for more information.

Car parking

24 hour parking is available at the Euro Car Park at £8.60 per night.*

* Charge correct at time of issue and is subject to change at anytime without prior notice.

Hotel location

Holiday Inn Express Nottingham City is located just 2 minutes walk from Nottingham Conference Centre, 5 minutes from railway station and within walking distance to shops and restaurants. The stylish rooms are designed to provide maximum comfort, including triple glazing to ensure a restful night's sleep, power-showers and a choice of pillows.

Restaurant / Bar facilities

There is a wide selection of dining venues within walking distance, Tonic, Ask, Las Iguanas, 4550 Miles from Delhi and Cumin all offer special discounts for our hotel guests, simply show your key card wallet to receive the discount.

Ask 25% off total bill Monday – Sunday

Cumin 15% off total bill Monday – Sunday

4550 Miles from Delhi 15% off total bill Sunday – Thursday

Las Iguanas 20% off food Monday – Thursday

Tonic 10% off A La Carte menu Monday – Thursday

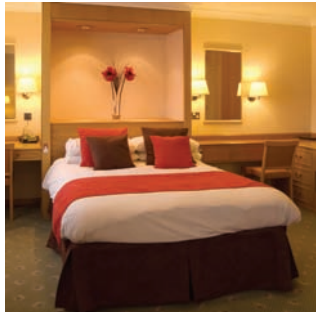
Other services available

The hotel provides a dinner take-away delivery service including Italian, Indian and Chinese, these are available as an in-house package to charge to your bill. They also have a wine and dine package including a takeaway and complimentary movie of your choice.

The Espresso Café Bar located in the lounge area has a vibrant and energetic atmosphere making this an ideal place to meet friends, to hold a relaxed meeting or to just sit back, and enjoy a freshly brewed mug of coffee.

Complimentary wireless Internet access is available at Espresso Café Bar and in the bar and Great room.

The Strathdon Hotel



Hotel contact details

The Strathdon Hotel,
44 Derby Road, City Centre, Nottingham, NG1 5FT

T: 0115 941 8501
F: 0115 948 3725
E: info@strathdon-hotel-nottingham.com
W: www.strathdon-hotel-nottingham.com

Name and contact details

General Manager – Martin Hunt

T: 0115 941 8501
E: gm@strathdon-hotel-nottingham.com

Reservations Supervisor – Carly Lawes

T: 0115 941 8501
E: info@strathdon-hotel-nottingham.com

Booking reference

Nottingham Conference Centre Special Rate

Rates

Single	£40
Twin / Double	£60
Triple (1 DB, 1 S)	£80
Suite	£80

Breakfast price on booking £7.50 pp

Breakfast rack rate £7.95 Continental / £9.95 Full English

The above rates are inclusive of VAT and subject to availability, breakfast is excluded. Please call for more information.

Disability access

Full access to ground floor, limited wheelchair access to other floors. Please call for more information.

Car parking

24-hour rate:*	£9.50 at nearby NCP
5 pm – 9 am rate:*	£7.50

* Charges correct at time of issue and subject to change at anytime without prior notice.

Hotel location

City centre, less than 5 minutes walk from the Nottingham Conference Centre and Old Market Square. Broadmarsh Bus and Nottingham Train Stations are both under a mile away.

Restaurant / Bar facilities

2- and 3-course Table d'hôte dining is available in our Bobbins Restaurant Monday to Saturday, while our Boston Bean Company Bar is open 7 days a week for more informal occasions, serving drinks, snacks and classic bar food.

Rutland Square Hotel



Hotel contact details

Rutland Square Hotel,
St James's Street, Nottingham, NG1 6FJ

T: 0115 941 1114

F: 0115 941 0014

Name and contact details

Claudia Cole

Booking reference

Nottingham Conference Centre

Rates

Single	£68
Twin / Double	£78
Executive / Deluxe	£88
Penthouse	£210

The above rates are inclusive of breakfast and VAT, and subject to availability. Please call for more information.

Car parking

£6 per night*

* Charge correct at time of issue and is subject to change at anytime without prior notice.

Hotel location

The Rutland Square Hotel is situated in the very heart of the city, just a short walk from Nottingham Castle. Converted from a Victorian warehouse, the hotel shares the city's proud heritage and has retained its period elegance whilst offering all the up-to-date facilities our guests expect and deserve.

Our Woods Restaurant, contemporary in design, offers a choice of dining from quick light meals to something more substantial off our A La Carte Menu, which has broad appeal.

The hotel is a convenient twenty-minute drive from the M1, and is within walking distance of many of the local tourist attractions and recreational amenities making it ideal for business and leisure.

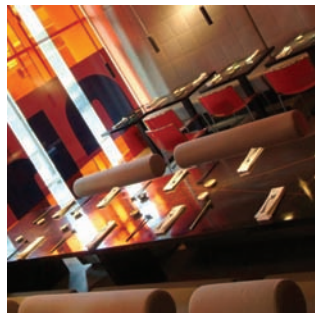
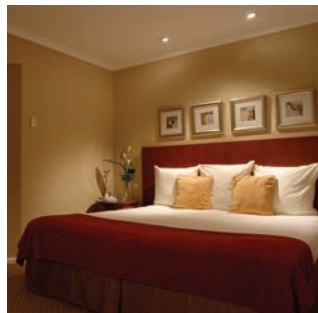
Restaurant / Bar facilities

Woods Restaurant and Bar

Leisure facilities

Affiliated to Fit Space (£4)

Park Plaza Nottingham



Hotel contact details

Park Plaza Nottingham,
41 Maid Marian Way, Nottingham, NG1 6GD

T: 0115 947 7200

F: 0115 947 7300

E: ppnsales@pphe.com

W: www.parkplaza.com/nottingham

Name and contact details

Reservations – Angela Dawson

E: adawson@pphe.com

General Manager – Stephen Bench

E: sbench@pphe.com

Booking reference

NCCR

This can either be quoted direct with our reservations department or alternatively entered in the promotional code box on our website www.parkplaza.com/nottingham

Rates

Single	£80 Mon – Thurs £65 Fri – Sun
Twin / Double	£85 Mon – Thurs £70 Fri – Sun
Executive	£100 Mon – Thurs £85 Fri – Sun

The above rates are inclusive of breakfast and VAT, and subject to availability. Please call for more information.

Disability access

Full disability access, please call for more information.

Car parking

Prices from £5 for 24 hours*

Parking options include two NCP car parks located across the road from the hotel, available 24-hours a day, and a valet parking option to a secure compound.

* Charge correct at time of issue and is subject to change at any time without prior notice.

Hotel location

Park Plaza Nottingham is a 4-star deluxe hotel located in the heart of Nottingham city centre just a 5 minute walk from Nottingham Conference Centre, 10 minutes from the train station, and just 100 metres from the Old Market Square and some of the best shopping, restaurants and bars anywhere in the UK.

Restaurant / Bar facilities

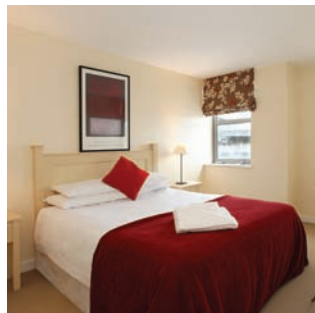
Park Plaza Nottingham is home to the multi-award winning Chino Latino modern Pan-Asian restaurant and cocktail bar serving a fusion of south-east Asian food to tempt and excite every appetite accompanied by expertly prepared cocktails, bottled beers and a carefully selected but extensive wine list. It also offers an extensive room service menu unparalleled in the city, available 24-hours a day* as well as a tempting lobby menu.

* Certain items available 24-hours

Leisure facilities

All hotel guests can enjoy a wide range of cardio and resistance equipment in the hotels 11th floor Fitness Suite with panoramic city views.

SACO Serviced Apartments



Hotel contact details

SACO Serviced Apartments
SACO House, The Ropewalk, Nottingham, NG1 5DQ

T: 0845 122 0405

Name and contact details

Reservations

T: 0845 122 0405

Group bookings – Shan Hucker

T: 07855 468 829

Booking reference

Nottingham Conference Centre

Rates

Single £90

Twin / Double £90

We have one and two bedroom apartments at this location.

One bedroom apartment is £90 inc VAT per apartment, per night.

Continental Breakfast Pack £10 + VAT per pack.

The above rates are inclusive of VAT and subject to availability, breakfast is excluded. Please call for more information.

Car parking

Secured £7.50 + VAT per night*

Unsecured / off road £4.50 + VAT per night*

Street car parking, which is metered and available on the Ropewalk, immediately outside the apartment entrance.

* Charges correct at time of issue and subject to change at any time without prior notice.

Hotel location

Conveniently located on the Ropewalk of Nottingham, SACO offers extensive views over the city and prestigious residential area of the Park estate. The apartments are ideal for access to the city centre shopping areas with its renowned boutiques and designer stores, just 5 minutes walk away. There is also a wealth of bars, restaurants, cinemas and theatres close by. The business and commercial districts are also within walking distance, as is Nottingham Castle, the Playhouse and the Nottingham Conference Centre.

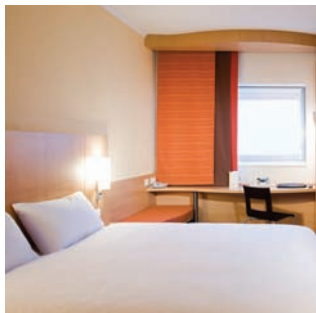
Restaurant / Bar facilities

There are no bar and restaurant facilities on site. However, we do provide an information directory for all local amenities.

Leisure facilities

There are no leisure facilities at SACO Nottingham. However, full details of local leisure facilities and discounts can be found in the information directory within each apartment.

Ibis Nottingham Centre



Hotel contact details

Ibis Nottingham Centre,
16 Fletcher Gate, Nottingham, NG1 2FS

T: 0115 985 3600

F: 0115 985 3610

E: h6160@accor.com

W: www.ibishotel.com

Name and contact details

Reservations Manager – Richard Carline

E: richard.carline@accor.com

Booking reference

Nottingham Conference Centre C13

Rates

Single £57

Twin / Double £64

Disabled Rooms Same price as Single / Double

Special prices available for group reservations.

The above rates are inclusive of breakfast and VAT, and subject to availability. Please call for more information.

Disability access

Full disability access, please call for more information.

Car parking

Prices £4 overnight, £16 for 24 hours.*

* Charges correct at time of issue and subject to change at any time without prior notice.

Hotel location

City centre, 10 minutes from Nottingham Conference Centre or 3 tram stops, 5 minutes from railway station and within walking distance to shops and restaurants.

Restaurant / Bar facilities

24-hour snacks and soft drinks, bar open until midnight.

Breakfast from 6.30 am until 10 am midweek (available until 12 noon on Saturday and Sunday).

Leisure facilities

£5 day pass available from reception for Hoofers health club, 5 minutes walk away.

Hart's Hotel Nottingham



Hotel contact details

Hart's Hotel Nottingham,
Standard Hill, Park Row, Nottingham, NG1 6GN

T: 0115 988 1900
F: 0115 9477 600
E: reception@hartshotel.co.uk
W: www.hartshotel.co.uk

Name and contact details

General Manager – Katinka Rieger

Booking reference

Nottingham Conference Centre

Rates

Standard Double	£105 per night
Superior Double	£125 per night
Garden Room	£155 per night
Suite	£210 per night

Breakfast available from £8.50 per person.

The above rates are inclusive of VAT and subject to availability, breakfast is excluded. Please call for more information.

Disability access

Full disabled access throughout and two dedicated disabled bedrooms. Please call for more information.

Car parking

£8 per car per night / residents only.*

Due to limited space pre-bookings for the car park are appreciated.

* Charge correct at time of issue and is subject to change at any time without prior notice.

Hotel location

4* Boutique Hotel, situated in a picturesque and tranquil location, just 3 minutes walk from Nottingham's city centre, shops and restaurants.

Only 10 minutes walk from Nottingham Conference Centre.

5 minutes by car from Nottingham train station.

Restaurant / Bar facilities

The Park Bar

Hotel bar open daily (24-hours for guests). Serving breakfast and hot and cold food between 10 am and 10 pm.

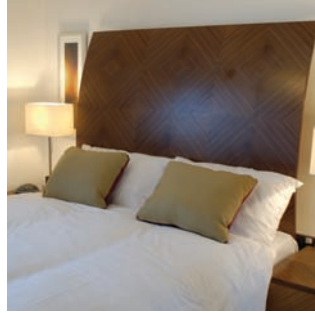
Hart's Restaurant

Award-winning restaurant offering modern British food. Open daily for lunch (12 noon to 2 pm) and dinner (7 pm to 9.30 pm)

Leisure facilities

Small fitness room available.

Premier Apartments Nottingham



Hotel contact details

Premier Apartments Nottingham,
Ice House Belward Street, Nottingham, NG1 1JZ

T: 0115 908 2000
F: 0115 908 2060
E: sales@premierapartmentsnottingham.com
W: www.premierapartmentsnottingham.com

Name and contact details

Reservations

T: 0115 908 2000
E: info@premierapartmentsnottingham.com

General Manager – Flori Carp

E: gm@premierapartmentsnottingham.com

Booking reference

Nottingham Conference Centre

Rates

Rates based on Monday – Thursday per night, long-stay discounted rates available on request. Weekend rates also available on request.

Twin / Double	£67	sleeps a maximum of 2 people.
Two Double Bedroom	£90	sleeps a maximum of 4 people.
Penthouse	£140	sleeps a maximum of 4 people.

The above rates are inclusive of VAT and subject to availability, breakfast is excluded. Please call for more information.

Disability access

Ramp access to the front of the building, please call for more information.

Car parking

Parking available on-site underneath the building – gated entry code, CCTV monitored and spot checked. Charged at £10 per space per night resident parking only, pre-booking a must as spaces are limited.*

* Charge correct at time of issue and is subject to change at any time without prior notice.

Hotel location

Premier Apartments Nottingham offer guests the perfect alternative to a traditional hotel stay. Our apartments provide great value for money in a central location, ideal for business or exploring the city.

They are located adjacent to the National Ice Centre and Nottingham's trendy Lace Market area, with only a short walk to the main shopping areas, bars and restaurants.

This attractive apartment development consists of 52 Apartments, which feature 33 One Bedroom, 15 Two Bedroom and 4 Penthouse Apartments. Each apartment is furnished to a high standard featuring open plan fully equipped kitchen, including fridge / freezer, washer / dryer, microwave, cutlery and crockery. Lounge / dining areas are spacious providing comfortable surroundings and a generous living space to relax and entertain in. One-bedroom apartments feature separate full bathroom and two-bedroom apartments feature master bedroom with en suite shower room and a further bathroom.

Bedrooms include linen, radio alarm clock and hairdryer.

Apartment rates are fully inclusive of electricity, rates, telephone line rental and linen. A weekly clean is also included.

Lace Market Hotel



Hotel contact details

Lace Market Hotel,
29-31 High Pavement, Nottingham, NG1 1HE

T: 0115 852 3232

E: stay@lacemarkethotel.com

W: www.thefinessecollection.com/lace

Name and contact details

Reservations

T: 0115 852 3232

E: stay@lacemarkethotel.com

General Manager – Jessica MacDonald

T: 0115 852 3232

E: jmacdonald@thefinessecollection.com

Booking reference

Nottingham Conference Centre

Rates

Single	£80
Twin / Double	£90
King Bedded Double	£100
Superior	£120
Suite	£150

All rates include:

- Breakfast
- Complimentary Wi-Fi
- Complimentary access to Virgin Active gym (located off-site)
- Complimentary bottled mineral water each day
- Complimentary dessert when ordering a starter and main course
- 10% off all beverages

- 25% discount on best available rates at TFC hotels
- Free or discounted parking

The above rates are inclusive of VAT and subject to availability. Please call for more information.

Disability access

Limited disability access, please call for more information.

Car parking

Offsite valet parking from £15 per night.*

* Charge correct at time of issue and is subject to change at any time without prior notice.

Hotel location

The hotel is opposite the Galleries of Justice and next to St Mary's Church. 2 minutes walk from the Westfield Shopping Centre. Two public car parks within 2 minutes walk. The hotel is a 2 minute walk from the nearest tram stop.

Restaurant / Bar facilities

Merchants

Merchant's restaurant offers an elegant yet relaxed dining experience in the heart of Nottingham's trendy Lace Market area. One of the most popular restaurants in Nottingham and firmly established on the city's restaurant map, Merchants restaurant has become renowned for its innovative, sophisticated food and understated yet attentive service.

Saint Bar

Angelic cocktails, service that is super sweet and interiors that are dripping with class and style. Saint is for glamorous girly nights, fabulous pre-dinner drinks and late-night martinis.

Cock & Hoop

A traditional Victorian pub, Cock & Hoop is renowned for its wholesome British cooking and fine range of real ales.

Jurys Inn Nottingham



Hotel contact details

Jurys Inn Nottingham,
Waterfront Plaza, Station Street, Nottingham, NG2 3BJ

T: 0115 901 6700
F: 0115 901 6777
W: www.jurysinns.com

Name and contact details

Revenue Manager – Alison Turner
T: 0115 901 6707

General Manager – Simon Anglin
T: 0115 901 6701

Sales Manager – Rachel Brown
E: rachel_brown@jurysinns.com

Booking reference

Nottingham Conference Centre

Rates

Single	£65
Twin / Double	£72
Disabled Rooms	£65

The above rates are inclusive of breakfast and VAT, and subject to availability. Please call for more information.

Disability access

Full disability access, please call for more information.

Car parking

Parking is available at the Parc Centre Car Park, on Queens Road adjacent from the hotel.

Day rate: £5*

24 hours: £11*

* Charges correct at time of issue and subject to change at any time without prior notice.

Hotel location

Jurys Inn Nottingham is ideally situated on Station Street, a two-minute walk from the main train station. Jurys Inn Nottingham is a short 10-minute walk from the Nottingham Conference Centre or only a two-minute tram journey. We are minutes away from all business, shopping centres, cultural and entertainment districts. This Nottingham hotel is the ideal base to enjoy this vibrant city.

Restaurant / Bar facilities

The hotel bar is the ideal spot for a quick lunch or to grab a bite to eat with colleagues and friends. Dishing up great bar food and drinks in contemporary surroundings, it is ideal for people on the go or even for those who just want to relax over a light supper. Its unique approach to food expresses itself in the vibrant cuisine on the menu, plus the relaxed and welcoming atmosphere of its surroundings.

Serving breakfast and dinner seven days a week, these informal yet stylish restaurants serve up delicious international cuisine that everyone can enjoy. Whether you are looking for a light snack or a hearty meal, our restaurant can suit your needs. Totally committed to high quality food and wines at very affordable prices, you can thoroughly enjoy the relaxed atmosphere of our restaurant.

Leisure facilities

Offering a fantastic extra service to all Jurys Inn guests. Working in partnership with Virgin Active, for just £5 (special concession rate) at Virgin Active, you can enjoy the 'largest' gym and leisure facilities in Nottingham city centre.

Park Inn Hotel



Hotel contact details

Park Inn Hotel, Nottingham,
296 Mansfield Road, Nottingham, NG5 2BT

T: 0115 935 9988
F: 0115 924 5227
E: reservations.nottingham@rezidorparkinn.com
W: www.nottingham.parkinn.co.uk

Name and contact details

Reservations Supervisor – Ali Rees

T: 0115 935 9988

General Manager – Mike Coleman

T: 0115 935 9988

Booking reference

Nottingham Conference Centre

Rates

Single	£68
Double	£75
Twin (Business friendly)	£85
Suite	£99

Group discounts available on request.

The above rates are inclusive of breakfast and VAT, and subject to availability. Please call for more information.

Disability access

Fully DDA compliant. Disabled parking available, please call for more information.

Car parking

350 free car parking available to all guests.

Hotel location

Park Inn Nottingham is located less than a mile from the centre of Nottingham. Conveniently close to all major transport links including tram, bus and 1 mile from the Nottingham train station.

The hotel is easy to locate on the A60 Mansfield Road.

Restaurant / Bar facilities

The Red Bar and Grill is a brand new concept for the recently refurbished Park Inn Nottingham. Combining the very best of seasonal products with an uncomplicated menu which allows the ingredients to do the talking. The menu offers a choice of the best gourmet burgers, light bites, seasonal soups and a great range of local specialties, salads and signature dishes from the charcoal grill. All complemented by smoothies, shakes and an extensive variety of wines, beers and spirits.

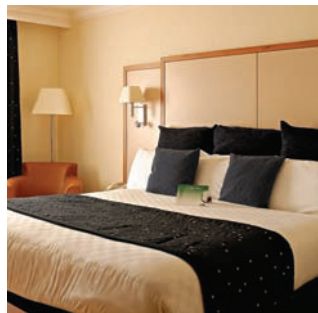
The RBG Bar is open daily serving an international choice of drinks, food, wines and cocktails.

Room service is available 24-hours.

Leisure facilities

All guests are entitled to use the hotel's extensive on-site leisure facilities, comprising of an indoor heated swimming pool, whirlpool bath, sauna, steam room and cardio-vascular gymnasium.

Holiday Inn Nottingham



Hotel contact details

Holiday Inn Nottingham,
Castle Bridge Road, Nottingham, NG7 1GX

T: 0115 993 5000

Name and contact details

Lisa Harbor-Smith

Booking reference

Nottingham Conference Centre

Rates

Double room single occupancy	£82
Double twin room double occupancy	£92
Superior rooms	£97
Executive	£107
Disabled rooms	£82

The above rates are inclusive of breakfast and VAT, and subject to availability. Please call for more information.

Car parking

Included in the rate.

Restaurant / Bar facilities

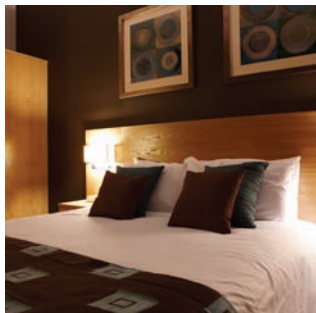
Main restaurant open 6 – 10 pm.

Lunch and bar snacks available during the day, 24-hours room service.

Leisure facilities

A small mini gym on site.

The Best Western Westminster Hotel



Hotel contact details

The Best Western Westminster Hotel,
312 Mansfield Road, Nottingham, NG5 2EF

T: 0115 955 5000
F: 0115 955 5005
E: mail@westminster-hotel.co.uk
W: www.westminster-hotel.co.uk

Name and contact details

Reservations – Sue Lamb

T: 0115 955 5000
E: sue.lamb@westminster-hotel.co.uk

General Manager – Phil Rea

T: 0115 955 5000
E: phil.rea@westminster-hotel.co.uk

Booking reference

Nottingham Conference Centre

Rates

Single	£50
Twin / Double	£60
Suite	£65
Executive / Deluxe	£65

The above rates are inclusive of breakfast and VAT, and subject to availability. Please call for more information.

Disability access

Please call for more information.

Car parking

Ample, on site complimentary car parking available to all guests.

Hotel location

The Best Western Westminster Hotel is located less than a mile from the centre of Nottingham. Conveniently close to all major transport links including tram, bus and 1 mile from the Nottingham train station. The hotel is easy to locate on the A60 Mansfield Road.

Restaurant / Bar facilities

The locally acclaimed and well established Carrington Restaurant here at the Westminster Hotel prides itself on honest home cooked food in a relaxed atmosphere. Seasonally changing menus are popular amongst guests and locals and everyone is sure to find a favourite. We also have a fully licensed bar serving bar snacks every day for those wanting something lighter to eat.

Leisure facilities

The hotel can provide gym passes for a local gym to hotel guests at a small surcharge. We also offer in house health and beauty treatments from Nottingham's leading provider.

The Nottingham Belfry



Hotel contact details

The Nottingham Belfry,
Mellors Way, Nottingham, NG8 6PY

T: 0115 973 9393
F: 0115 973 9494
E: nottinghambelfryreservations@qhotels.co.uk
W: www.qhotels.co.uk/hotels/the-nottingham-belfry.aspx

Name and contact details

Reservations – Becky Brown

T: 0115 973 9393
E: nottinghambelfryreservations@qhotels.co.uk

General Manager – Martinus Louwerse

T: 0115 973 9393
E: mlouwerse@qhotels.co.uk

Director of Sales – Alyson Bentley

T: 07971 619 745
E: abentley@qhotels.co.uk

Booking reference

Nottingham Conference Centre

Rates

Single Standard from £75
Twin / Double from £85

The above rates are inclusive of breakfast and VAT, and subject to availability. Please call for more information.

Disability access

Full including five accessible / adapted bedrooms. Please call for more information.

Car parking

Free onsite car parking for 250 cars.

Hotel location

Not located in the city centre but just 4 miles out, however, it is easily accessible by car, and it's only minutes from Junction 26 of the M1 for Nottingham. It's only a 15-minute drive to Nottingham Conference Centre from The Nottingham Belfry.

Restaurant / Bar facilities

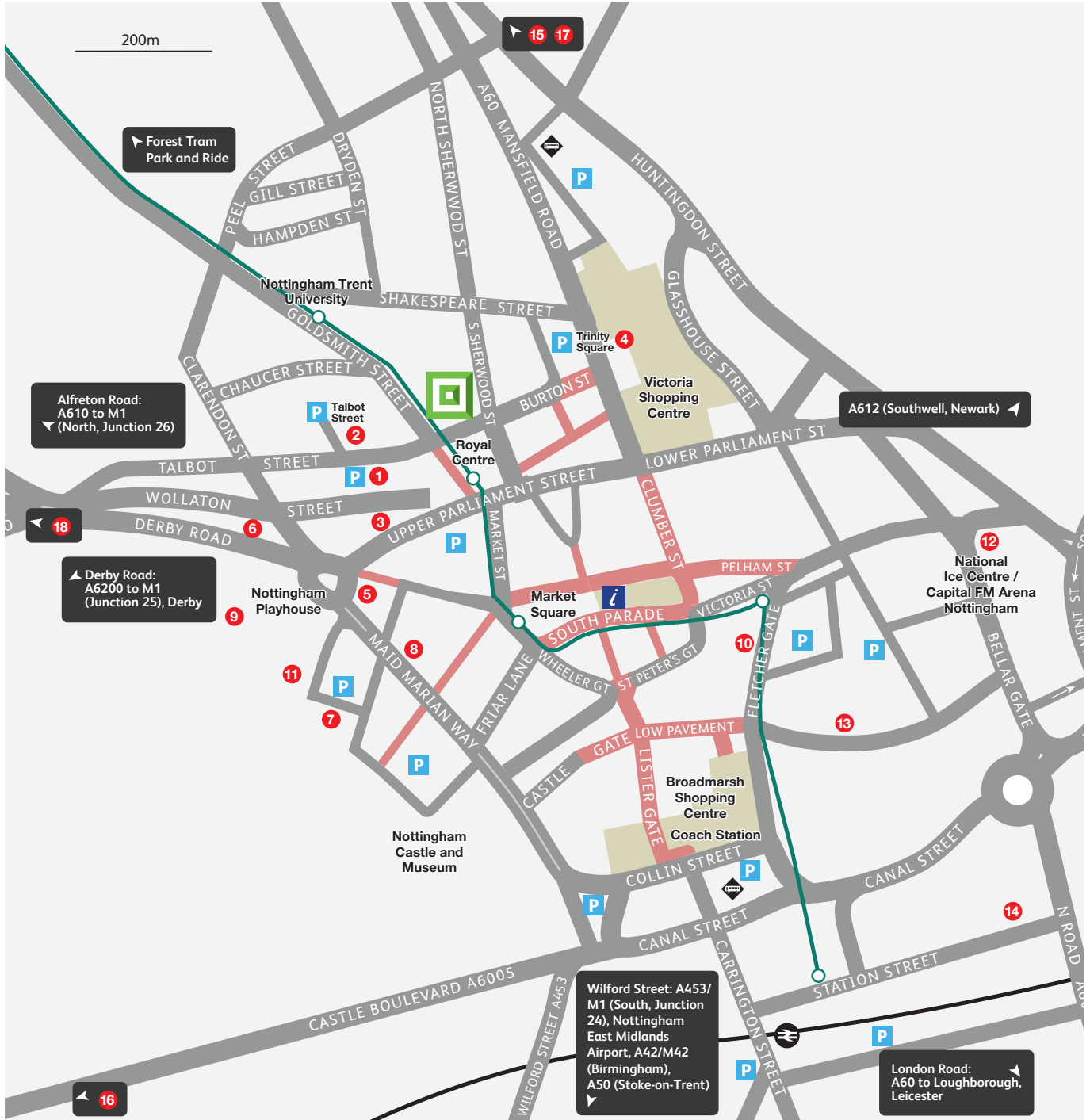
24-hour room service available.

The Lawrence Restaurant / Oaks Bar and Lounge – open all day.

Leisure facilities

Extensive leisure facilities – gymnasium, swimming pool, spa, sauna, steam room and spa treatment rooms.

Hotel locations



- | | |
|---------------------------------------|---------------------------------------|
| 1 Crowne Plaza Nottingham | 10 Ibis Nottingham Centre |
| 2 Welbeck Hotel | 11 Hart's Hotel Nottingham |
| 3 Days Hotel Nottingham | 12 Premier Apartments Nottingham |
| 4 Hilton Nottingham | 13 Lace Market Hotel |
| 5 Holiday Inn Express Nottingham City | 14 Jurys Inn Nottingham |
| 6 The Strathdon Hotel | 15 Park Inn Hotel |
| 7 Rutland Square Hotel | 16 Holiday Inn Nottingham |
| 8 Park Plaza Nottingham | 17 The Best Western Westminster Hotel |
| 9 SACO Serviced Apartments | 18 The Nottingham Belfry |

- | | |
|------------------------------|------------------------|
| Nottingham Conference Centre | Bus station |
| Pedestrian street | Railway station |
| General parking | City Information Point |
| Tram route and stops | |

Nottingham Conference Centre

Burton Street
Nottingham
NG1 4BU

+44 (0)115 848 8000

enquiries@nottinghamconferencecentre.co.uk

www.nottinghamconferencecentre.co.uk



This information can be made available in alternative formats.

Please note that, while Nottingham Conference Centre has taken all reasonable steps to ensure the accuracy of this brochure at the time of printing, the information contained within this brochure may change from time to time.

© Nottingham Conference Centre and may not be reproduced or transmitted in any form in whole or in part without prior written consent.

5636/03/11